

The image features a background of a lush green field with several black cattle. In the foreground, two black cows are prominent; one has a yellow ear tag with the number '060'. In the background, a wooden fence and a line of tall, thin trees are visible under a clear sky. The text 'CALLAWAY CATTLE COMPANY' is overlaid in the top left in a large, stylized, gold-colored font.

CALLAWAY
CATTLE COMPANY

Join Us
11.23.2024
12:30 PM

12TH ANNUAL AFFORDABULL & FEMALE SALE
CALLAWAY CATTLE CO, HOGANSVILLE, GA
SELLING SIMANGUS BULLS AND COMMERCIAL FEMALES

CALLAWAY CATTLE COMPANY

12th Annual

AFFORDA**BULL**SALE

We would like to welcome you to the 12th Annual **AFFORDA Bull** and Female Sale on November 23, 2024.

What an exciting time in the cattle industry. We've never seen prices like we've seen in the last two years. We all remember the record high prices of 2014 and 2023 but this year's market has surpassed the 2014 and 2023 highs. And most of the economists think this rally will be longer lived.

While a majority of the bulls in the sale will be SimAngus™, our new guest cosigner, Jessie Driggers, has some nice purebred and high percentage Simmental bulls, both red and black. Check out his lot numbers 41-50. I'm sure you will like them on paper as well as in person.

The bred heifers from Honeywood are A.I.'ed to Tahoe and Iron Horse. They were then cleaned up with a bull Clay bought out of our sale last year and a bull David Gazda selected for Clay at the Tifton Test Sale. Buy them with confidence knowing they are carrying quality genetics. They should make great additions to anyone's herd.

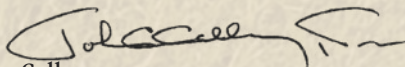
Again the cattle will not go through a sale ring but instead will be displayed on large screen TVs during the sale. Of course they can be seen before the sale in traps adjacent to the sale facility. The cattle will be on display all day Friday for your inspection.

Then we invite you to join us that evening at dusk for a brisket BBQ prepared by Lowell and Lisa Kissinger. You won't be disappointed.

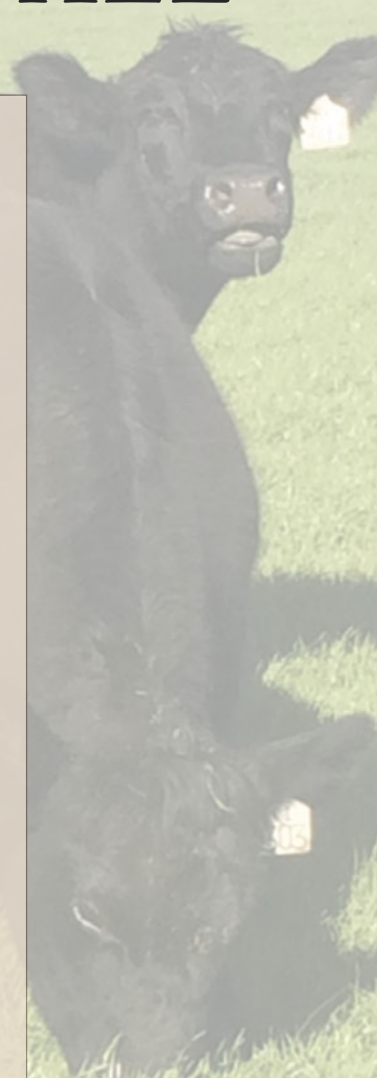
We'll have coffee and pastries on Saturday morning and the famous Johnny Brown's Brunswick stew for lunch at 11 am, followed by the sale at 12:30pm.

If you would like to see any of the cattle between now and the sale time, just call and we will be glad to accommodate your visit.

We hope to see you on November 23rd, 2024



John Callaway



John Callaway

770-355-2165

callawaycattle@gmail.com

Wes Pope

770-833-4142

Wespope123@gmail.com

Jessie Driggers

912-237-0608

Jessie.driggers76@gmail.com

Clay Allen (Bred Heifers)

Honeywood Farms

770-468-9777

12th Annual

AFFORDA**BULL**SALE

Saturday, November 23, 2024 at 12:30 PM

Callaway Cattle Company

Hogansville, GA

INFORMATION

SCHEDULE OF EVENTS

Before Thursday November 21 – Cattle can be seen at farms

Thursday, November 21 – Cattle available for viewing after 12 noon

Friday, November 22 – Cattle available for viewing all day

Saturday, November 23 – 8 a.m. – Coffee & donuts

11 a.m. – Lunch

12:30 p.m. – SALE

SALE STAFF

Auctioneer: Carroll Cannon 229-881-0721

Ringman: Glenn Smith 478-747-6539

Ringman: Paul Wall 678-898-0028

Office: Patsie Cannon 229-881-2705

ABSENTEE BIDDING

If you are unable to attend the sale but wish to bid, please contact us in advance to register. We will have a conference call phone line set up on sale day. When you pre-register we will give you a dial-in number to call at 12:30p.m. on sale day as well as an access code to get connected. Then you can listen to the entire sale live and bid on any bulls or females. If you are unable to be on the phone during the auction, a bid may be left with any of the sale staff or the hosts: John, Wes, Clay or Jessie. All bids left in advance will be handled with the utmost integrity.

HEALTH

Bulls have been vaccinated for IBR, BRSV, BVD, PI-3, Pasteurella, Leptospirosis, Vibrio and Clostridial diseases. All bulls have been wormed alternately with Dectomax and Valbazen and all are virgin bulls. Proper interstate health papers will be available at checkout.

FERTILITY

All bulls have been semen tested by Dr. Philip Wilson of Southland Veterinary Services, Bowdon, Georgia approximately 30 days prior to sale and will be accompanied with proper documentation.

GPS SALE LOCATION

2280 Coweta Heard Rd, Hogansville, GA 30230

HOTEL INFORMATION

Hotels are available nearby Newnan, GA, LaGarng GA, and Hogansville, GA.

SALE DAY PHONES

John Callaway 770-355-2165

Glenn Smith 478-747-6539

Carroll Cannon 229-881-0721

Patsie Cannon 229-881-2705

Paul Wall 678-898-0028

Wes Pope 770-833-4142

Clay Allen 770-468-9777

Jessie Driggers 912-237-0608

Chuck Joiner 770-301-3243

Jack Dyer 678-378-5231

TERMS AND CONDITIONS

All bulls sell under the terms and conditions of the ASA. We guarantee all bulls sold in this sale to be fertile for the first breeding season if they have been given proper care. If a bull fails to settle cows during the first breeding season, we will provide a satisfactory replacement if one is available, or issue a credit, less salvage value toward next year's sale. If there is a problem we would ask to be notified as soon as possible. This is not a life insurance policy. We would suggest that proper care and nutrition be provided to these animals.

WINTER CARE

If you are not ready to take your bull(s) at sale time, we offer a Winter Care program for \$4.00/day. There will be no guarantee against injury or death other than we assure you that care of the bulls will be to the best of our ability. We recommend that you protect your investment with insurance. All bulls can be kept free of charge until December 1, 2024 with the daily charge rate beginning this date.

LIABILITY

All persons attending the sale do so at their own risk. Callaway Cattle Co. assumes no liability for property damage or accidents that may occur.

ANNOUNCEMENTS

Announcements made on sale day will take precedence over information printed in this catalog.

SIMANGUS™ BULLS



DBHR Honor H060 ASA# 3789447 • Sire of Lots 1, 2, 3, 4

1

JCCJ HONOR 307L

ASA# 4328169

Tattoo: 307L • BD: 9/3/23
Black • Homo Polled • 3/4 SM 1/4 AN

Sire: KBHR HONOR H060
HOOK'S BEACON 56B
WS MISS SUGAR C4

Dam: JCCJ MS DAISY 026H
JCCJ NIGHTRIDE 705E
JCCJ MISS DAISY 828F

BW	70
Ratio	100
Adj. WW	682
Ratio	94
Adj. YW	1175
Ratio	92

CE	BW	WW	YW	MCE	Milk	MWW	Stay	Marb	BF	REA	\$API	\$TI
14.4	-1.4	82.2	127.3	7.9	23.5	64.4	17.2	.54	-.036	.81	155	91
30	25	30	30	35	55	40	25	25	55	30	20	20

% Rank EPD

2

JCCJ HONOR 316L

ASA# 4328143

Tattoo: 316L • BD: 9/11/23
Black • Polled • 3/4 SM 1/4 AN

Sire: KBHR HONOR H060
HOOK'S BEACON 56B
WS MISS SUGAR C4

Dam: JCCJ MS DAISY 069H
JCCJ FINAL CHANCE 795E
JCCJ MISS DAISY 789E

BW	65
Ratio	93
Adj. WW	673
Ratio	93
Adj. YW	1233
Ratio	97

CE	BW	WW	YW	MCE	Milk	MWW	Stay	Marb	BF	REA	\$API	\$TI
14.4	-2	77.9	123.6	8.5	25.9	64.8	18.7	.45	-.042	.86	150	85
30	45	45	40	25	35	40	15	40	45	25	25	40

% Rank EPD

3

JCCJ HONOR 321L

ASA# 4328151

Tattoo: 321L • BD: 9/16/23
Black • Polled • 3/4 SM 1/4 AN

Sire: KBHR HONOR H060
HOOK'S BEACON 56B
WS MISS SUGAR C4

Dam: JCCJ MISS DAISY 634D
S D S IN FORCE 112Y
JCCJ 729 MISS DAISY 434B

BW	80
Ratio	110
Adj. WW	685
Ratio	109
Adj. YW	1270
Ratio	105

CE	BW	WW	YW	MCE	Milk	MWW	Stay	Marb	BF	REA	\$API	\$TI
12	.1	86.9	133.5	7.6	28.9	71.9	18.2	.51	-.037	.85	152	91
60	50	15	20	40	15	15	15	30	55	25	25	20

% Rank EPD

4

JCCJ HONOR 324L

ASA# 4328133

Tattoo: 324L • BD: 9/20/23
Black • Homo Polled • 3/4 SM 1/4 AN

Sire: KBHR HONOR H060
HOOK'S BEACON 56B
WS MISS SUGAR C4

Dam: JCCJ MISS DAISY 574C
MR NLC UPGRADE U8676
JCCJ MISS DAISY OF 032-219

BW	74
Ratio	102
Adj. WW	649
Ratio	
Adj. YW	1263
Ratio	

CE	BW	WW	YW	MCE	Milk	MWW	Stay	Marb	BF	REA	\$API	\$TI
13	-1.3	81.6	124.4	7.2	24.5	65	16.2	.47	-.041	.74	147	88
45	30	30	35	45	45	35	35	35	45	40	30	25

% Rank EPD

SIMANGUS™ BULLS



TJ Stone Cold 336G ASA# 33611790 • Sire of Lots 5, 6, 7

5

JCCJ STONE COLD 305L

ASA# 4328137

Tattoo: 305L • BD: 9/1/23
Black • Homo Polled • 5/8 SM 3/8 AN

Sire: TJ STONE COLD 336G
 └─ TJ FROSTY 318E
 └─ TJ 11D
 Dam: JCCJ MS DAISY 012H
 └─ JCCJ NIGHTRIDE 705E
 └─ JCCJ MISS DAISY 861F

BW	70
Ratio	100
Adj. WW	700
Ratio	97
Adj. YW	1208
Ratio	95

CE	BW	WW	YW	MCE	Milk	MWW	Stay	Marb	BF	REA	\$API	\$TI
14.6	-1.9	81.7	132.8	8.5	25.2	65.9	17.1	.43	-.025	.67	151	88
30	20	30	25	25	40	35	25	40	70	55	25	25

% Rank EPD

6

JCCJ STONE COLD 317L

ASA# 4328122

Tattoo: 317L • BD: 9/11/23
Black • Homo Polled • 5/8 SM 3/8 AN

Sire: TJ STONE COLD 336G
 └─ TJ FROSTY 318E
 └─ TJ 11D
 Dam: JCCJ MISS DAISY 719E
 └─ J BAR J NIGHTRIDE 225Z
 └─ JCCJ MISS DAISY 510C

BW	58
Ratio	80
Adj. WW	533
Ratio	85
Adj. YW	1104
Ratio	91

CE	BW	WW	YW	MCE	Milk	MWW	Stay	Marb	BF	REA	\$API	\$TI
17.7	-2.8	67.3	110.9	10.9	19.4	52.9	16.3	.55	-.016	.56	156	84
10	15	80	65	5	85	90	35	25	85	75	20	45

% Rank EPD

7

JCCJ STONE COLD 326L

ASA# 4328161

Tattoo: 326L • BD: 9/24/23
Black • Homo Polled • 5/8 SM 3/8 AN

Sire: TJ STONE COLD 336G
 └─ TJ FROSTY 318E
 └─ TJ 11D
 Dam: JCCJ MS GOLDDIGGER 521C
 └─ W/C UNITED 956Y
 └─ JCCJ MISS GOLDDIGGER430P

BW	78
Ratio	107
Adj. WW	483
Ratio	77
Adj. YW	1165
Ratio	97

CE	BW	WW	YW	MCE	Milk	MWW	Stay	Marb	BF	REA	\$API	\$TI
13	-1.8	66.6	110.9	8.7	23.9	57.1	17.5	.19	-.012	.36	130	72
45	20	85	65	25	50	75	20	80	85	95	60	80

% Rank EPD



SIMANGUST™ BULLS



Gibbs 9121G Kenworth ASA# 3717071 Sire of Lots 8 and 9

8 JCCJ KENWORTH 310L

ASA# 4328147

Tattoo: 310L • BD: 9/6/23
Black • Polled • 5/8 SM 3/8 AN

Sire: GIBBS 9121G KENWORTH
YON FULL FORCE C398
GIBBS 0532X SM STAR P342

Dam: JCCJ MS DAISY 971G
JCCJ GRADUATE 744E
JCCJ MISST DAISY 569C

BW	70
Ratio	99
Adj. WW	636
Ratio	101
Adj. YW	1249
Ratio	103

CE	BW	WW	YW	MCE	Milk	MWW	Stay	Marb	BF	REA	\$API	\$TI
12.6	.1	81	132.9	8	29.1	70.2	14.7	.46	-.014	.68	141	86
50	50	35	25	35	15	15	50	35	85	50	40	35

9 JCCJ KENWORTH 315L

ASA# 4328124

Tattoo: 315L • BD: 9/10/23
Black • Homo Polled • 3/4 SM 1/4 AN

Sire: GIBBS 9121G KENWORTH
YON FULL FORCE C398
GIBBS 0532X SM STAR P342

Dam: JCCJ MISS DAISY 861F
KOCH BIG TIMBER 685D
JCCJ 845 MISS DAISY 227Z

BW	60
Ratio	82
Adj. WW	649
Ratio	103
Adj. YW	1316
Ratio	109

CE	BW	WW	YW	MCE	Milk	MWW	Stay	Marb	BF	REA	\$API	\$TI
14.4	-.1	85.2	138.8	7.8	27.8	71	14.4	.47	-.027	.68	146	90
30	50	20	15	35	20	15	55	35	70	50	30	20



Partisover Deep Roots 126 ASA# 4098411 Sire of Lots 10 and 11

10 JCCJ DEEP ROOTS 320L

ASA# 4328135

Tattoo: 320L • BD: 9/16/23
Black • Polled • 3/8 SM 5/8 AN

Sire: PARTISOVER DEEP ROOTS 126
CONNEALY CONFIDENCE PLUS
PARTISOVER BURGESS 744

Dam: JCCJ MISS DAISY 730E
CCR WIDE RANGE 9005A
JCCJ 729 MISS DAISY 001X

BW	70
Ratio	96
Adj. WW	607
Ratio	97
Adj. YW	1198
Ratio	99

CE	BW	WW	YW	MCE	Milk	MWW	Stay	Marb	BF	REA	\$API	\$TI
13.4	-.6	81.8	138.4	7.2	23.1	63.9	17.2	.48	.022	.81	147	86
40	40	30	15	45	60	40	25	35	99	30	30	35

11 JCCJ DEEP ROOTS 330L

ASA# 4328139

Tattoo: 330L • BD: 9/26/23
Black • Polled • 3/8 SM 5/8 AN

Sire: PARTISOVER DEEP ROOTS 126
CONNEALY CONFIDENCE PLUS
PARTISOVER BURGESS 744

Dam: JCCJ MS DAISY 065H
JCCJ FINAL CHANCE 795E
JCCJ MISS DAISY 604D

BW	80
Ratio	114
Adj. WW	790
Ratio	109
Adj. YW	1324
Ratio	104

CE	BW	WW	YW	MCE	Milk	MWW	Stay	Marb	BF	REA	\$API	\$TI
10.1	1.1	88.8	147.2	5.3	28.6	73.1	15.8	.59	.015	.77	145	91
85	70	15	10	80	20	10	40	20	99	35	35	20

SIMANGUST™ BULLS



GW Triple Crown 018C ASA# 2954741 Sire of Lots 12 and 13

12 JCCJ TRIPLE CROWN 322L ASA# 4328159

Tattoo: 322L • BD: 9/19/23
Black • Polled • 5/8 SM 3/8 AN

Sire: GW J BAR J NIGHTRIDE 225Z
TRIPLE CROWN 018C
GW MISS GPRD 359A

Dam: JCCJ KOCH BIG TIMBER 685D
MISS DAISY 844F
JCCJ 264 MISS DAISY 443B

BW	60
Ratio	82
Adj. WW	596
Ratio	95
Adj. YW	1072
Ratio	89

CE	BW	WW	YW	MCE	Milk	MWW	Stay	Marb	BF	REA	\$API	\$TI
14.6	-1.2	81.9	132.3	9	17.3	58	14.5	.51	-.044	.82	149	89
30	30	30	25	20	95	70	55	30	45	30	25	25

13 JCCJ TRIPLE CROWN 325L ASA# 4328150

Tattoo: 325L • BD: 9/24/23
Black • Polled • 5/8 SM 3/8 AN

Sire: GW J BAR J NIGHTRIDE 225Z
TRIPLE CROWN 018C
GW MISS GPRD 359A

Dam: JCCJ JCCJ UNITED 836F
MS DAISY 074H
JCCJ MISS DAISY 752E

BW	68
Ratio	99
Adj. WW	639
Ratio	89
Adj. YW	1205
Ratio	95

CE	BW	WW	YW	MCE	Milk	MWW	Stay	Marb	BF	REA	\$API	\$TI
13.2	-.7	78.4	128.6	8.3	15	53.9	15	.51	-.056	.93	147	86
45	35	40	30	30	99	85	50	30	30	15	30	30



14 JCCJ BIG TIMBER 304L ASA# 4328126

Tattoo: 304L • BD: 8/29/23
Black • Homo Polled • 3/4 SM 1/4 AN

Sire: KOCH HOOK'S YELLOWSTONE 97Y
BIG TIMBER 685D
KOCH MS HOOKS BOY

Dam: JCCJ JCCJ NIGHTRIDE 705E
MS DAISY 115J
JCCJ MS DAISY 920G

BW	48
Ratio	74
Adj. WW	658
Ratio	88
Adj. YW	1023
Ratio	83

CE	BW	WW	YW	MCE	Milk	MWW	Stay	Marb	BF	REA	\$API	\$TI
14.7	-2.8	71	108.7	8	17.7	53	15.2	.33	-.032	.62	137	79
30	15	70	70	35	95	90	45	60	55	65	45	60

KOCH Big Timber 685D Sire of Lot 14



15 JCCJ NIGHTRIDE 314L ASA# 4328142

Tattoo: 314L • BD: 9/9/23
Black • Homo Polled • 5/8 SM 3/8 AN

Sire: J BAR J NIGHTRIDE 225Z
PREMIUM BEEF 021TS
J BAR J MISS ND 793X

Dam: JCCJ BRF LOCK DOWN 6113D
MS DAISY 159J
JCCJ MISS DAISY 543C

BW	62
Ratio	93
Adj. WW	767
Ratio	103
Adj. YW	1306
Ratio	106

CE	BW	WW	YW	MCE	Milk	MWW	Stay	Marb	BF	REA	\$API	\$TI
15.1	-2.3	73	115	8	20.2	56.7	13.7	.62	-.020	.67	152	88
25	15	65	55	35	80	75	65	20	85	55	25	30

J Bar J Nightride 225Z Sire of Lot 15

SIMANGUST™ BULLS



BRF Lock Down 6113D ASA# 3314295 • Sire of Lots 16 - 27

16

JCCJ LOCK DOWN 328L

ASA# 4328118

Tattoo: 328L • BD: 9/26/23
Black • Polled • 1/2 SM 1/2 AN

Sire: BRF LOCK DOWN 6113D
PARTI UP GIRL 107X

Dam: JCCJ MISS DAISY 712E
JCCJ MISS DAISY 305A

BW	75
Ratio	103
Adj. WW	699
Ratio	111
Adj. YW	1240
Ratio	103

CE	BW	WW	YW	MCE	Milk	MWW	Stay	Marb	BF	REA	\$API	\$TI
11.9	.4	82.6	128.1	6.2	26.6	67.9	14.6	.42	-.013	.54	136	85
60	60	30	30	65	30	25	55	45	85	75	50	40

17

JCCJ LOCK DOWN 329L

ASA# 4328134

Tattoo: 329L • BD: 9/26/23
Black • Homo Polled • 1/2 SM 1/2 AN

Sire: BRF LOCK DOWN 6113D
PARTI UP GIRL 107X

Dam: JCCJ MISS DAISY 556C
JCCJ 059 MISS DAISY 029X

BW	72
Ratio	99
Adj. WW	625
Ratio	100
Adj. YW	1118
Ratio	93

CE	BW	WW	YW	MCE	Milk	MWW	Stay	Marb	BF	REA	\$API	\$TI
12.7	-.8	75.9	117.4	7.6	22.8	60.8	15.4	.34	.001	.47	133	80
50	35	50	50	40	60	60	45	55	95	85	55	55

18

JCCJ LOCK DOWN 332L

ASA# 4328132

Tattoo: 332L • BD: 9/29/23
Black • Polled • 1/2 SM 1/2 AN

Sire: BRF LOCK DOWN 6113D
PARTI UP GIRL 107X

Dam: JCCJ MISS DAISY 680D
JCCJ 729 MISS DAISY 001X

BW	68
Ratio	93
Adj. WW	660
Ratio	105
Adj. YW	1234
Ratio	102

CE	BW	WW	YW	MCE	Milk	MWW	Stay	Marb	BF	REA	\$API	\$TI
11.7	1.8	85.1	133.6	7.1	28.3	70.8	15.7	.35	-.042	.84	134	84
65	85	20	20	50	20	15	40	55	45	25	50	40

19

JCCJ LOCK DOWN 334L

ASA# 4328121

Tattoo: 334L • BD: 9/30/23
Black • Polled • 5/8 SM 3/8 AN

Sire: BRF LOCK DOWN 6113D
PARTI UP GIRL 107X

Dam: JCCJ MISS DAISY 616D
JCCJ MS DAISY 303A

BW	80
Ratio	110
Adj. WW	656
Ratio	104
Adj. YW	1204
Ratio	100

CE	BW	WW	YW	MCE	Milk	MWW	Stay	Marb	BF	REA	\$API	\$TI
10.8	.3	78.1	118.3	6.1	29.2	68.2	12.9	.46	-.026	.66	132	84
75	55	45	50	65	15	25	70	35	70	55	55	45

SIMANGUS™ BULLS

20

JCCJ LOCK DOWN 341L

ASA# 4328140

Tattoo: 341L • BD: 10/10/23
Black • Polled • 1/2 SM 1/2 AN

Sire: BRF W/C LOCK DOWN 206Z
LOCK DOWN 6113D
PARTI UP GIRL 107X

Dam: JCCJ JCCJ CONFIDENCE 514C
MISS DAISY 825F
JCCJ MISS DAISY 616D

BW	80
Ratio	110
Adj. WW	723
Ratio	115
Adj. YW	1313
Ratio	109

CE	BW	WW	YW	MCE	Milk	MWW	Stay	Marb	BF	REA	\$API	\$TI
10.5	.8	83.2	130.1	5.9	31.3	73.2	14.2	.40	-.005	.62	133	85
80	65	25	25	70	10	10	60	45	90	65	55	40

21

JCCJ LOCK DOWN 343L

ASA# 4328136

Tattoo: 343L • BD: 10/14/23
Black • Polled • 5/8 SM 3/8 AN

Sire: BRF W/C LOCK DOWN 206Z
LOCK DOWN 6113D
PARTI UP GIRL 107X

Dam: JCCJ MS MR NLC UPGRADE U8676
HARLEY 304A
JCCJ PLAYGIRL 603S

BW	72
Ratio	99
Adj. WW	619
Ratio	99
Adj. YW	1203
Ratio	100

CE	BW	WW	YW	MCE	Milk	MWW	Stay	Marb	BF	REA	\$API	\$TI
12.1	1.3	79.4	118.7	7	24.2	63.9	13.8	.36	-.041	.78	129	81
60	75	40	50	50	50	40	60	55	45	35	60	55

22

JCCJ LOCK DOWN 344L

ASA# 4328166

Tattoo: 344L • BD: 10/14/23
Black • Polled • 5/8 SM 5/16 AN 1/16 MA

Sire: BRF W/C LOCK DOWN 206Z
LOCK DOWN 6113D
PARTI UP GIRL 107X

Dam: JCCJ FBF1/SF IGNITION
MISS DAISY 774E
JCCJ 760 MISS DAISY 063X

BW	85
Ratio	117
Adj. WW	632
Ratio	101
Adj. YW	1238
Ratio	103

CE	BW	WW	YW	MCE	Milk	MWW	Stay	Marb	BF	REA	\$API	\$TI
8.7	2.9	80.8	124	5	21	61.4	15.1	.17	-.036	.65	115	74
95	95	35	40	80	75	55	50	85	55	60	80	75

23

JCCJ LOCK DOWN 355L

ASA# 4328117

Tattoo: 355L • BD: 11/1/23
Black • Homo Polled • 1/4 SM 3/4 AN

Sire: BRF W/C LOCK DOWN 206Z
LOCK DOWN 6113D
PARTI UP GIRL 107X

Dam: 660D SAC CONVERSATION
JCCJ 924 MISS DAISY 906

BW	70
Ratio	96
Adj. WW	784
Ratio	125
Adj. YW	1315
Ratio	109

CE	BW	WW	YW	MCE	Milk	MWW	Stay	Marb	BF	REA	\$API	\$TI
11.1	1.0	86.6	133.9	6.4	28.8	71.8	12.4	.65	.018	.71	140	90
70	70	20	20	60	15	15	75	15	99	45	40	20

24

JCCJ LOCK DOWN 356L

ASA# 4328153

Tattoo: 356L • BD: 11/5/23
Black • Polled • 5/8 SM 3/8 AN

Sire: BRF W/C LOCK DOWN 206Z
LOCK DOWN 6113D
PARTI UP GIRL 107X

Dam: JCCJ CCR WIDE RANGE 9005A
MISST DAISY 569C
JCCJ MS DAISY 351N

BW	76
Ratio	105
Adj. WW	637
Ratio	101
Adj. YW	1145
Ratio	95

CE	BW	WW	YW	MCE	Milk	MWW	Stay	Marb	BF	REA	\$API	\$TI
10.2	1.1	72.8	110.8	7	24.9	61.3	13.2	.29	-.022	.72	119	75
80	70	65	65	50	45	55	70	65	70	45	75	75

25

JCCJ LOCK DOWN 357L

ASA# 4328165

Tattoo: 357L • BD: 11/7/23
Black • Polled • 1/2 SM 1/2 AN

Sire: BRF W/C LOCK DOWN 206Z
LOCK DOWN 6113D
PARTI UP GIRL 107X

Dam: JCCJ GW PREMIUM BEEF 021TS
MISS DAISY 708E
JCCJ MS DAISY 343A

BW	70
Ratio	96
Adj. WW	674
Ratio	107
Adj. YW	1195
Ratio	99

CE	BW	WW	YW	MCE	Milk	MWW	Stay	Marb	BF	REA	\$API	\$TI
12.8	.4	76.9	118.2	7.2	27.3	65.8	14.2	.42	-.024	.49	134	82
50	60	45	50	45	25	35	60	45	70	85	50	50

26

JCCJ LOCK DOWN 358L

ASA# 4328130

Tattoo: 358L • BD: 11/9/23
Black • Polled • 5/8 SM 3/8 AN

Sire: BRF W/C LOCK DOWN 206Z
LOCK DOWN 6113D
PARTI UP GIRL 107X

Dam: JCCJ JCCJ WIDE RANGE 534C
MISS DAISY 877F
JCCJ 605 MISS DAISY 039X

BW	74
Ratio	102
Adj. WW	672
Ratio	107
Adj. YW	1334
Ratio	111

CE	BW	WW	YW	MCE	Milk	MWW	Stay	Marb	BF	REA	\$API	\$TI
9.5	2.4	83.5	131	6.1	25.7	67.5	15.3	.29	-.022	.69	125	80
90	90	25	25	65	35	25	45	65	70	50	65	55

27

JCCJ LOCK DOWN 359L

ASA# 4328155

Tattoo: 359L • BD: 11/15/23
Black • Polled • 1/2 SM 1/2 AN

Sire: BRF W/C LOCK DOWN 206Z
LOCK DOWN 6113D
PARTI UP GIRL 107X

Dam: JCCJ SAC CONVERSATION
MISS DAISY 666D
JCCJ 566 MISS DAISY 129Y

BW	62
Ratio	85
Adj. WW	715
Ratio	114
Adj. YW	1296
Ratio	107

CE	BW	WW	YW	MCE	Milk	MWW	Stay	Marb	BF	REA	\$API	\$TI
11.6	1.6	72.6	112.5	7.6	26.4	62.7	13.1	.50	.009	.68	131	79
65	80	65	60	40	30	50	70	30	95	50	55	60

SIMANGUS™ BULLS



CCR Cowboy Cut 50482

ASA# 2703910 • Grandsire of Lots 28 - 32

28 JCCJ COWBOY CUT 335L

ASA# 4328168

Tattoo: 335L • BD: 10/1/23
Black • Polled • 5/8 SM 3/8 AN

Sire: JCCJ CCR COWBOY CUT 5048Z
COWBOY CUT 146J
JCCJ MISS DAISY 774E
Dam: JCCJ MS JCCJ BROADWAY 733E
SWEETDREAMS 042H
JCCJ SWEET DREAMS 456B

BW	74
Ratio	106
Adj. WW	827
Ratio	115
Adj. YW	1393
Ratio	109

% Rank EPD	CE	BW	WW	YW	MCE	Milk	MWW	Stay	Marb	BF	REA	\$API	\$TI
	10	3.4	90.7	141.1	6.6	24.7	70.6	16.2	.30	-.037	.77	129	83
	85	99	10	15	55	45	15	35	65	55	35	60	45

29 JCCJ COWBOY CUT 337L

ASA# 4328145

Tattoo: 337L • BD: 10/5/23
Black • Polled • 5/8 SM 3/8 AN

Sire: JCCJ CCR COWBOY CUT 5048Z
COWBOY CUT 146J
JCCJ MISS DAISY 774E
Dam: JCCJ MS JCCJ CONFIDENCE 514C
RITA 980G
JCCJ 820 MISS RITA 252Z

BW	88
Ratio	123
Adj. WW	715
Ratio	114
Adj. YW	1378
Ratio	114

% Rank EPD	CE	BW	WW	YW	MCE	Milk	MWW	Stay	Marb	BF	REA	\$API	\$TI
	8.6	2.5	82.9	127.5	5.4	25.6	67.1	16	.21	-.034	.64	120	77
	95	90	25	30	75	40	30	35	80	55	60	75	65

30 JCCJ COWBOY CUT 348L

ASA# 4328162

Tattoo: 348L • BD: 10/19/23
Black • Polled • 3/4 SM 1/4 AN

Sire: JCCJ CCR COWBOY CUT 5048Z
COWBOY CUT 146J
JCCJ MISS DAISY 774E
Dam: JCCJ MS JCCJ NIGHTRIDE 705E
DAISY 924G
JCCJ MS GOLDDIGGER 710E

BW	76
Ratio	106
Adj. WW	543
Ratio	86
Adj. YW	1260
Ratio	104

% Rank EPD	CE	BW	WW	YW	MCE	Milk	MWW	Stay	Marb	BF	REA	\$API	\$TI
	11.3	.6	71	110.9	6.2	13.7	49	17.1	.34	-.040	.61	132	75
	70	60	70	65	65	99	99	25	55	55	65	55	75

31 JCCJ COWBOY CUT 352L

ASA# 4328125

Tattoo: 352L • BD: 10/28/23
Black • Polled • 3/4 SM 1/4 AN

Sire: JCCJ CCR COWBOY CUT 5048Z
COWBOY CUT 146J
JCCJ MISS DAISY 774E
Dam: JCCJ MS JCCJ FINAL CHANCE 795E
DAISY 036H
JCCJ MISS DAISY 748E

BW	74
Ratio	106
Adj. WW	743
Ratio	103
Adj. YW	1369
Ratio	108

% Rank EPD	CE	BW	WW	YW	MCE	Milk	MWW	Stay	Marb	BF	REA	\$API	\$TI
	9.7	2.9	80.7	126.6	5.4	24.9	65.2	16.6	.22	-.055	.74	122	76
	85	95	35	35	75	45	35	30	75	30	40	70	70

32 JCCJ COWBOY CUT 354L

ASA# 4328120

Tattoo: 354L • BD: 11/2/23
Black • Polled • PB SM

Sire: JCCJ CCR COWBOY CUT 5048Z
COWBOY CUT 146J
JCCJ MISS DAISY 774E
Dam: JCCJ MS CCR COWBOY CUT 5048Z
DAISY 938G
JCCJ MS DAISY 344A

BW	80
Ratio	113
Adj. WW	564
Ratio	90
Adj. YW	1071
Ratio	89

% Rank EPD	CE	BW	WW	YW	MCE	Milk	MWW	Stay	Marb	BF	REA	\$API	\$TI
	9.9	1.9	75.6	111.9	6	16.4	54.2	17.1	.30	-.042	.58	138	79
	75	65	60	60	50	95	85	35	30	95	99	40	55

33 JCCJ BIG TIMBER 345L

ASA# 4328114

Tattoo: 345L • BD: 10/15/23
Black • Polled • 5/8 SM 3/8 AN

Sire: JCCJ KOCH BIG TIMBER 685D
BIG TIMBER 116J
JCCJ MISS DAISY 568C
Dam: JCCJ MS KOCH BIG TIMBER 685D
DAISY 117J
660D

BW	78
Ratio	114
Adj. WW	813
Ratio	109
Adj. YW	1360
Ratio	111

% Rank EPD	CE	BW	WW	YW	MCE	Milk	MWW	Stay	Marb	BF	REA	\$API	\$TI
	12.2	-2.6	75.2	113.8	7.4	25.8	63.2	15.1	.53	-.015	.52	146	87
	60	15	55	60	45	35	45	50	25	85	80	30	30



Lot 34 313L

BD 9-9-23 • 1/2 Angus 1/2 Waygu

He is a non-registered commercial bull. Anyone looking to produce high quality freezer beef should look at this one.

SIMANGUS™ BULLS



WS Enhancement 25H ASA# 3764886 • Sire of Lots 41 – 44

41

DRG LEVI 23L

ASA# 4251993

Tattoo: 23L • BD: 9/17/23
Black • Polled • 3/4 SM 1/4 AN

Sire: WS ENHANCEMENT 25H
WS PROCLAMATION E202
WS SWEET SIXTEEN F16

Dam: DRG MISS BOULDER 14F
CCR BOULDER 1339A
DRG DESTINY 5B

BW	65
Ratio	89
Adj. WW	538
Ratio	93
Adj. YW	1063
Ratio	97

CE	BW	WW	YW	MCE	Milk	MWW	Stay	Marb	BF	REA	\$API	\$TI
18.5	-6.0	57.7	98.2	11.2	27.8	56.7	16.4	.83	.008	.46	174	89
5	1	99	90	4	20	75	35	5	95	90	4	25

42

DRG LANDON 19L

ASA# 4251981

Tattoo: 19L • BD: 9/13/23
Black • Polled • 3/4 SM 1/4 AN

Sire: WS ENHANCEMENT 25H
WS PROCLAMATION E202
WS SWEET SIXTEEN F16

Dam: DRG POLKA 11D
STEVENSON ROCKMOUNT RX933
WOODLAWN POLKA

BW	73
Ratio	100
Adj. WW	560
Ratio	103
Adj. YW	1067
Ratio	99

CE	BW	WW	YW	MCE	Milk	MWW	Stay	Marb	BF	REA	\$API	\$TI
18.5	-2.2	75.5	128.9	10.4	25.2	63.3	17.7	.65	.012	.64	168	91
5	20	55	30	10	40	45	20	15	99	60	10	20

43

DRG LILAC 17L

ASA# 4251999

Tattoo: 17L • BD: 9/10/23
Black • Polled • 3/4 SM 1/8 JE 1/16 AN 1/16 CS

Sire: WS ENHANCEMENT 25H
WS PROCLAMATION E202
WS SWEET SIXTEEN F16

Dam: DRG INDEPENDENCE DAY 1G
DRG COWBOY CUT 15E
DRG ELSIE 33E

BW	73
Ratio	101
Adj. WW	518
Ratio	95
Adj. YW	1002
Ratio	93

CE	BW	WW	YW	MCE	Milk	MWW	Stay	Marb	BF	REA	\$API	\$TI
15.6	-3.4	73.8	118.7	9.9	21.5	58.4	21.6	.60	.009	.38	169	89
20	10	60	50	15	75	70	2	20	95	95	10	25

44

DRG LUCAS 13L

ASA# 4251990

Tattoo: 13L • BD: 9/5/23
Black • Polled • 3/4 SM 1/4 AN

Sire: WS ENHANCEMENT 25H
WS PROCLAMATION E202
WS SWEET SIXTEEN F16

Dam: DRG JAIMEE 9E
DRG SHEAR FORCE 14A
DRG FINAL ANSWER 23C

BW	73
Ratio	100
Adj. WW	494
Ratio	91
Adj. YW	1085
Ratio	101

CE	BW	WW	YW	MCE	Milk	MWW	Stay	Marb	BF	REA	\$API	\$TI
15.9	-3.0	61	103.3	9.4	29.3	59.3	19.7	.83	.033	.39	173	87
20	10	95	80	15	15	65	10	5	99	95	5	30

PUREBRED AND SIMANGUS™ BULLS



LCDR Reserve 210J

ASA# 3960638 • Sire of Lots 45 - 47

45

DRG LEON 21L

ASA# 4251996

Tattoo: 21L • BD: 9/15/23
Black • Homo Polled • PB SM

Sire: LCDR RESERVE 210J
LCDR MS ECHO 43E

Dam: HRF ALICIA C1
HOOKS SHEAR FORCE 38K
HOOKS ALICIA 6A

BW	78
Ratio	107
Adj. WW	646
Ratio	112
Adj. YW	1177
Ratio	107

CE	BW	WW	YW	MCE	Milk	MWW	Stay	Marb	BF	REA	\$API	\$TI
10.8	1.2	96	148.6	7.5	22.5	70.4	15.2	.25	-.067	1.42	145	94
60	50	5	5	25	55	20	55	35	70	1	30	15

% Rank EPD

46

DRG LORENZO 25L

ASA# 4251983

Tattoo: 25L • BD: 9/22/23
Black • Polled • 5/8 SM 3/8 AN

Sire: LCDR RESERVE 210J
LCDR MS ECHO 43E

Dam: DRG FINAL ANSWER 23C
DRG HILLARY 4A

BW	82
Ratio	111
Adj. WW	659
Ratio	114
Adj. YW	1196
Ratio	109

CE	BW	WW	YW	MCE	Milk	MWW	Stay	Marb	BF	REA	\$API	\$TI
8.8	1.5	93	147.1	5.9	26.5	72	14.9	.71	-.022	.56	152	97
90	80	10	10	70	30	15	50	10	70	75	25	10

% Rank EPD



47

DRG LAMAR 18L

ASA# 4251988

Tattoo: 18L • BD: 9/15/23
Black • Polled • 3/4 SM 1/4 AN

Sire: LCDR RESERVE 210J
LCDR MS ECHO 43E

Dam: DRG LADY FORCE 14E
BOYETT LADY B123

BW	76
Ratio	104
Adj. WW	606
Ratio	111
Adj. YW	1149
Ratio	107

CE	BW	WW	YW	MCE	Milk	MWW	Stay	Marb	BF	REA	\$API	\$TI
13.3	2.3	84.9	136.2	8.2	21.4	63.8	15.4	.57	-.028	.64	147	88
45	90	20	20	30	75	45	45	25	70	60	30	25

% Rank EPD

PUREBRED SIMMENTAL BULLS



GW Hilger One 454H
ASA# 3701575 • Sire of Lots 48 and 49

48

DRG LUKE 5L

ASA# 4251995

Tattoo: 5L • BD: 8/26/23
 Black • Polled • PB SM

Sire: GW HILGER ONE 454H
 GW MOVIN ON 183C
 GW MISS YUKON JACK 913E

Dam: DRG MISS BEACON 11H
 HOOK'S BEACON 56B
 WOODLAWN POLKA

BW	68
Ratio	99
Adj. WW	523
Ratio	90
Adj. YW	992
Ratio	91

CE	BW	WW	YW	MCE	Milk	MWW	Stay	Marb	BF	REA	\$API	\$TI
11.2	2.5	101.4	157.9	5.5	26.5	77.1	18.9	.31	-.047	1.17	155	97
55	80	2	2	60	25	3	15	30	95	10	20	10

49

DRG LARRY 20L

ASA# 4252000

Tattoo: 20L • BD: 9/11/23
 Red • Polled • PB SM

Sire: GW HILGER ONE 454H
 GW MOVIN ON 183C
 GW MISS YUKON JACK 913E

Dam: DRG ABIGAIL 26G
 IR IMPERIAL D948
 DRCK BRIDESMAID B30

BW	80
Ratio	113
Adj. WW	572
Ratio	99
Adj. YW	1109
Ratio	101

CE	BW	WW	YW	MCE	Milk	MWW	Stay	Marb	BF	REA	\$API	\$TI
9.7	.8	87.5	137.9	4.8	18.7	62.3	16.7	.49	-.044	.86	155	93
75	40	20	15	70	85	50	40	10	95	55	20	15

50

DRG LONNIE 14L

ASA# 4251989

Tattoo: 14L • BD: 9/7/23
 Red • Polled • PB SM

Sire: KS NET INCOME H433
 HOOK'S FULL FIGURES 11F
 KS ETHYL E183

Dam: DRG JORDAN 10J
 CDI SECRET AGENT 407C
 DRG MISS IMPERIAL 24G

BW	67
Ratio	100
Adj. WW	627
Ratio	108
Adj. YW	1130
Ratio	103

CE	BW	WW	YW	MCE	Milk	MWW	Stay	Marb	BF	REA	\$API	\$TI
16.3	-3.5	68.1	111.2	9.3	28.9	62.8	18.3	.68	-.071	.96	180	95
10	2	90	65	10	15	50	20	3	50	35	2	10



KS Net Income H433
ASA# 3713043 • Sire of Lot 50

REFERENCE SIREs

Purebred Simmental Reference Sires

Name	ASA Number	Breeds	CE	BW	WW	YW	MCE	Milk	Marb	BF	REA	API	TI	Lots Sired
JCCJ Cowboy Cut 146J	4049115	PB SM	8.5	3.9	81.8	124.7	5.6	19	.15	-.058	.72	129	77	28, 29, 30, 31, 32
		Percentile	85	95	35	35	60	85	55	85	85	60	65	
KBHR Honor H060	3789447	PB SM	17.1	-2	87.1	134.8	10.3	28	.58	-.046	1.11	181	101	1, 2, 3, 4
		Percentile	4	10	20	20	3	15	5	95	10	2	3	
KOCH Big Timber 685D	3133113	PB SM	15.7	-3.9	73.3	108.8	9.4	21.1	.32	-.030	.45	156	86	14
		Percentile	10	1	70	70	10	70	25	99	99	20	30	
KS Net Income H433	3713043	PB SM	18.8	-2.3	75	115.1	12.6	26.6	.51	-.045	.90	174	92	50
		Percentile	1	5	65	55	1	25	10	95	45	4	15	
LCDR Reserve 210J	3960639	PB SM	10.5	1.9	99.5	153.7	7.8	17.4	.65	-.041	1.1	166	104	45, 46, 47
		Percentile	65	65	3	3	20	90	3	95	15	10	2	
WS Enhancement 25H	3764886	PB SM	18.6	-3.2	82.6	136.9	11.7	30.1	.93	.014	.65	202	108	41, 42, 43, 44
		Percentile	2	2	35	15	1	10	1	99	95	1	1	

American Simmental Association Breed Average EPD for Current Purebred Simmental

CE	BW	WW	YW	MCE	Milk	Marb	BF	REA	API	TI
11.4	1.4	77.6	115.9	5.8	23	.16	-.07	.86	132	80

SimAngus™ Reference Sires

Name	ASA Number	Breeds	CE	BW	WW	YW	MCE	Milk	Marb	BF	REA	API	TI	Lots Sired
BRF Lock Down 6113D	3314295	1/2 SM 1/2 AN	11.6	1.2	86.2	131.9	6.5	25.8	.42	-.008	.65	132	86	16 - 27
		Percentile	65	75	20	25	60	35	45	90	60	55	35	
GIBBS 9121G Kenworth	3717071	1/2 SM 1/2 AN	15	-0.7	85.4	146.7	9.1	31.7	.74	.010	.68	161	98	8, 9
		Percentile	25	35	20	10	20	5	10	99	50	15	5	
GW Hilger One 454H	3701575	3/4 SM 1/4 AN/ AR	11.6	-0.1	99.9	157.6	5	26.5	.47	-.049	.92	156	98	48, 49
		Percentile	65	50	2	2	80	30	35	45	15	20	5	
J BAR J Nightride 225Z	2628568	5/8 SM 3/8 AN	17.1	-4	65.2	107.8	8.6	13.5	.90	-.035	.90	171	92	15
		Percentile	10	5	85	70	25	99	3	55	20	5	15	
JCCJ Big Timber 116J	4049058	3/4 SM 1/4 AN	16.1	-3.4	72.2	108.2	9.6	23.9	.46	-.038	.54	149	85	33
		Percentile	15	10	65	70	15	50	35	55	75	25	40	
GW Triple Crown 018C	2954741	5/8 SM 3/8 AN	15.1	-2.1	88.3	148	10.2	14.8	.76	-.058	1.26	171	101	12, 13
		Percentile	25	20	15	10	10	99	10	30	1	5	3	
TJ Stone Cold 336G	3611790	5/8 SM 3/8 AN	17.6	-3	80.7	135.5	11.7	30.1	.43	-.010	.67	161	90	5, 6, 7
		Percentile	10	10	35	20	3	10	40	90	55	15	20	

American Simmental Association Breed Average EPD for Hybrid Simmental

CE	BW	WW	YW	MCE	Milk	Marb	BF	REA	API	TI
12.5	0.2	75.5	116.9	6.8	23.8	.36	-.04	.67	133.5	81

American Angus Sire (Simmental Association EPD)

Name	ASA Number	Breeds	CE	BW	WW	YW	MCE	Milk	Marb	BF	REA	API	TI	Lots Sired
Partisover Deep Roots 126	4098411	PB AN	14	-0.7	88.5	156	6.5	28.8	.86	.083	.69	148	89	10, 11
		Percentile	35	35	15	3	60	15	4	99	50	30	25	

American Angus Sire (Angus Association EPD)

Name	AAA Number	Breeds	CED	BW	WW	YW	CEM	Milk	Marb	Fat	RE	\$W	\$B	Lots Sired
Partisover Deep Roots 126	20004765	PB AN	6	1.6	69	130	7	28	.84	.075	.92	71	162	10, 11
		Percentile	55	60	40	25	65	40	25	95	20	25	30	

American Angus Association Breed Averages for Current Sires

CED	BW	WW	YW	CEM	Milk	Marb	Fat	RE	\$W	\$B
6	1.3	63	112	8	26	.60	.017	.61	59	143

Quick Reference to ASA EPDs and \$ Indexes

Expected Progeny Differences (EPDs): EPDs are the most accurate and effective tool available for comparing genetic levels. In using EPDs, the difference between two sires' EPDs represents the unit difference expected in the performance of their progeny. For example, if sires A and B have EPDs of +10 and -5, a 15-unit difference would be expected in their progeny (moving from -5 to +10 yields 15 units). Key to using EPDs is knowing what units they are expressed in. For example, if the above case referred to weaning weight EPDs, A would be expected to sire 15-pounds more *weaning weight* than B. If calving ease were the trait, A would be expected to sire 15-percent more *unassisted births* in first-calf heifers; in other words, if B sired 30 assists in a group of 100 heifers, we'd expect A to require 15 assists. A percentile-ranking chart is required to determine where a bull's EPDs rank him relative to other bulls in the breed. For percentile rankings or more detailed information about EPDs and \$ indexes visit www.simmental.org. Listed below are the units ASA EPDs are expressed in:

All-Purpose Index (API): Dollars per cow exposed under an all-purpose-sire scenario. (See below for more details.)

Back Fat (BF): Inches of backfat.

Birth Weight (BW): Pounds of birth weight.

Calving Ease (CE): Percent of unassisted births when used on heifers.

Carcass Weight (CW): Pounds of carcass weight.

Maternal Calving Ease (MCE): Percent of unassisted births in first-calving daughters.

Milk (MLK): Pounds of weaning weight due to milk.

Marbling (MRB): Marbling score.

Maternal Weaning Weight (MWW): Pounds of weaning weight due to milk and growth.

Ribeye Area (REA): Square inches of ribeye.

Warner-Bratzler Shear Force (WBSF): Pounds of force required to shear a steak.

Stayability (STAY): Percent of daughters remaining in the cowherd at 6 years of age.

Terminal Index (TI): Dollars per cow exposed under a terminal-sire scenario. (See below for more details.)

Weaning Weight (WW): Pounds of weaning weight.

Yearling Weight (YW): Pounds of yearling weight.

Yield Grade (YG): Yield grade score.

\$ Indexes: Though EPDs allow for the comparison of genetic levels for many economically important traits, they only provide a piece of the economic puzzle. That's where \$ indexes come in. Through well-conceived, rigorous mathematical computation, \$ indexes blend EPDs and economics to estimate an animal's overall impact on your bottom line. The same technology that led to the dramatic progress in swine, poultry and dairy genetics over the last several decades was used to develop the following \$ indexes: **All-Purpose Index (API):** Evaluates sires for use on the entire cow herd (bred to both Angus first-calf heifers and mature cows) with the portion of their daughters required to maintain herd size retained and the remaining heifers and steers put on feed and sold grade and yield.

Terminal Index (TI): Evaluates sire for use on mature Angus cows with all offspring put on feed and sold grade and yield.

Using API and TI: First, determine which index to use; if you're keeping replacements use API, if not, TI. Then, just as with EPDs, zero in on the unit difference between bulls. (As described above, index units are in dollars per cow exposed.) The difference can be used to determine how much a bull is worth compared to another. Or, put another way, how much you can pay for one bull compared to another. For example, when buying an all-purpose-type sire, you can quickly figure a bull scoring +100 for API is worth an extra \$6,000 over a +50 bull if both are exposed to 30 cows over 4 years ($\$50 \text{ diff.} \times 30 \text{ hd.} \times 4 \text{ yr.} = \$6,000$). A percentile-ranking chart is required to determine where a bull's index value ranks him relative to other bulls in the breed. For percentile rankings or more detailed information about EPDs and \$ indexes visit www.simmental.org.

HONEYWOOD FARMS BRED HEIFERS



SERVICE SIRE - JCCJ COWBOY CUT 207K



SERVICE SIRE - LUCKY V STINGER 2230

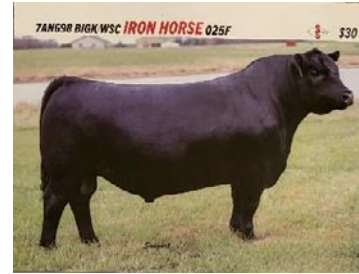


LOT#	BREED	SERVICE SIRE	DUE DATE
101	AN	JCCJ COWBOY CUT 207K	MAR
102	AN	JCCJ COWBOY CUT 207K	MAR
103	AN	JCCJ COWBOY CUT 207K	MAR
104	AN	JCCJ COWBOY CUT 207K	MAR
107	BWF	JCCJ COWBOY CUT 207K	MAR
108	BWF	JCCJ COWBOY CUT 207K	MAR
109	BWF	JCCJ COWBOY CUT 207K	MAR
110	BWF	JCCJ COWBOY CUT 207K	MAR
111	AN	JCCJ COWBOY CUT 207K	MAR
112	AN	JCCJ COWBOY CUT 207K	MAR
113	AN	JCCJ COWBOY CUT 207K	MAR
114	AN	JCCJ COWBOY CUT 207K	MAR
115	RAN	JCCJ COWBOY CUT 207K	MAR
116	BWF	JCCJ COWBOY CUT 207K	MAR
117	AN	JCCJ COWBOY CUT 207K	MAR
118	AN	JCCJ COWBOY CUT 207K	MAR
119	AN	JCCJ COWBOY CUT 207K	MAR
120	AN	JCCJ COWBOY CUT 207K	MAR
138	AN	LUCKY V STINGER 2230	MAR
139	BWF	LUCKY V STINGER 2230	MAR
140	AN	LUCKY V STINGER 2230	MAR
141	BWF	LUCKY V STINGER 2230	MAR
142	BWF	LUCKY V STINGER 2230	MAR
143	RWF	LUCKY V STINGER 2230	MAR
144	AN	LUCKY V STINGER 2230	MAR
145	AN	LUCKY V STINGER 2230	MAR

HONEYWOOD FARMS AI BRED HEIFERS



14AN502 TEHAMA **TAHOE** B767



7AN698 BIGK/WSC **IRON HORSE** 025F



LOT#	BREED	AI SAFE TO	DUE DATE
105	AN	TAHOE	FEB 18TH
106	AN	TAHOE	FEB 18TH
121	BWF	IRON HORSE	FEB 19TH
122	BWF	TAHOE	FEB 18TH
123	BWF	TAHOE	FEB 21ST
124	BWF	TAHOE	FEB 18TH
125	AN	IRON HORSE	FEB 18TH
126	AN	IRON HORSE	FEB 19TH
127	AN	IRON HORSE	FEB 20TH
128	AN	IRON HORSE	FEB 20TH
129	BWF	TAHOE	FEB 18TH
130	BWF	IRON HORSE	FEB 19TH
131	BWF	IRON HORSE	FEB 19TH
132	RWF	IRON HORSE	FEB 19TH
133	AN	IRON HORSE	FEB 19TH
134	AN	IRON HORSE	FEB 18TH
135	AN	IRON HORSE	FEB 19TH
136	CH	IRON HORSE	FEB 19TH
137	BWF	IRON HORSE	FEB 19TH

Some Thoughts on Taking Care of Your New Bull

Developed by: Dr. Francis L. Fluharty Professor and Head
Department of Animal and Dairy Science The University of Georgia
ffluhart@uga.edu

- Be as calm and quiet as possible while loading, hauling, unloading, and moving him to his new location. This applies every time we work cattle, but is especially important in those instances where we are dealing with potentially highly-stressed cattle.
- ASK WHAT THE BULL'S DIET WAS THE LAST FEW WEEKS. Depending on how the animals had grown earlier in their life, they may have been fed a forage-based diet, or they may still be on a higher-grain diet. Why does this matter? It takes about 6 weeks for the digestive tract to expand after an animal is switched from a grain-based diet to a forage-based diet. When there is not enough time for the digestive tract to expand, such as buying a bull that's been fed a high-grain diet with limited forage, and turning it out for breeding within a couple of weeks after arrival, they lose a lot of weight quickly, because they are expending a lot of energy, and their digestive tract isn't large enough to allow for an adequate forage intake, so the bull loses weight, and sperm production decreases along with body condition score (BCS). Keep in mind that bulls lose body condition during the breeding season, so they should be a 5.5 to 6.0 at the beginning of the breeding season. Bulls that are too fat, however, are not athletic, and they have lower sperm counts and lower sperm motility.
- Young bulls are still growing. They don't reach their mature weight until 3 years of age. These young bulls require proper nutrition to keep sperm quantity and quality high. If you are providing any supplemental feed, don't use a 12% protein diet. Use a 14% to 16% protein diet to meet their requirements during the breeding season.
- During the breeding season, bulls will lose weight, and if their BCS goes below a 5, they may not get cows pregnant. Giving some supplemental energy in the form of a grain mix will allow them to maintain their BCS. If you grind corn, do not grind it fine. Coarser is better. You don't need to give them more than 1% of their body weight in grain, usually, once they are at a BCS of 5. This means that a bull weighing 1200 pounds wouldn't get more than 12 pounds of grain mix. Don't go from no grain straight to their final amount. Start low, at 5 to 6 pounds per day. Increase ½ pound every other day. Do not increase the amount of grain every day. Make no more than half-pound per day increases, and keep the amount offered the same for 2 days before the next half-pound intake.
- Finally, have a high-quality trace mineral program that's offered free-choice. Use loose minerals, and check your mineral feeders frequently to make sure that they aren't empty.

Est. 1879
GODFREY'S
Feed
TRIED • TESTED • PROVEN

**Godfrey's
Madison, GA**

**Godfrey's
De Soto, GA**

**Now Two
Locations
to Serve You!**

**Now Servicing
Southwest Georgia
with Bulk Feeds**

TRUST • RELIABILITY • QUALITY

To learn more about our feeds and products
visit www.GodfreysFeed.com or call us at 706-342-0264

GEORGIA
grown
COMPANY

QR code

f Instagram

Thanks to our industry partners for your support of this sale.

ALA-GA ROLL OFF CONTAINER, INC.

17302 US Hwy 27
Roopville, GA 30170



ANDY ETHERIDGE
Owner/Operator

770-301-6589 Cell
770-854-5330 Office

andy@alagarolloff.com

zoetis

Alex Christidis
Territory Business Manager
Beef Cattle
M (352) 978-0865
E alex.christidis1@zoetis.com

Animal
Health
Supplies

Ivey's
OUTDOOR & FARM SUPPLY

Livestock-
Handling
Equipment

Kenny Sikes

108 N. Westover Blvd. • Albany, GA 31707-0011
Toll Free: (800) 868-7107 • Cell: (229) 344-3038
ksbeef66@gmail.com

Southland Veterinary Services, P.C.

Large and Small Animal Medicine & Surgery
Emergency Services Available



Phillip H. Wilson, DVM

P.O. Box 551
Bowdon, GA 30108

Phone: (770) 258-1900
Fax: (770) 258-9888



EMMALEE RICHARDSON
Feed Sales Representative

emmalee@godfreysfeed.com
www.godfreysfeed.com

OFFICE 706-342-0264
FAX 706-342-0237

**Callaway Cattle Company
2280 Coweta Heard Rd
Hogansville, GA 30230**



**THANKS FOR ATTENDING!
LOOK FOR US AGAIN IN 2025**